

# Ski Resort Hokkaido



ในช่วงฤดูหนาว Hokkaido เป็นเมืองยอดนิยมสำหรับนักท่องเที่ยว เป็นช่วงฤดูกาลที่มีงานเทศกาลสนุกๆ และมีกิจกรรมที่น่าสนใจหลายอย่าง การเล่นสกีก็เป็นหนึ่งในกิจกรรมยอดฮิตของคนญี่ปุ่นที่นิยมทำกันในช่วงฤดูหนาว ซึ่งในประเทศญี่ปุ่นก็มีสกีรีสอร์ทมากมายที่เปิดต้อนรับให้นักท่องเที่ยวได้ใช้บริการ

## นำเสนอสกีรีสอร์ทฮอกไกโดยอดนิยม

1. Niseko (นิเซโกะ) รายละเอียด [คลิก](#)
2. Kiroro (คิโรโระ) รายละเอียด [คลิก](#)
3. Furano (ฟูราโนะ) รายละเอียด [คลิก](#)

# Niseko, Hokkaido



[Always Niseko \[Superior\]](#)

ราคาเริ่มต้น 3,420 บาท/ห้อง/คืน



[The Freshwater \[Premium\]](#)

ราคาเริ่มต้น 6,840 บาท/ห้อง/คืน



[The Setsumon \[Premium\]](#)

ราคาเริ่มต้น 7,410 บาท/ห้อง/คืน



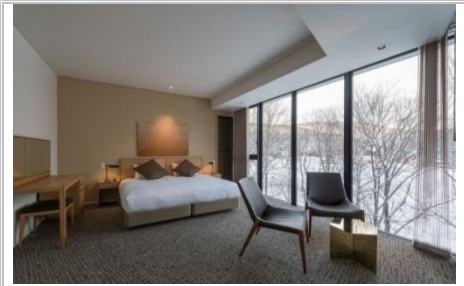
[Setsugetsu \[Premium\]](#)

ราคาเริ่มต้น 8,550 บาท/ห้อง/คืน



[Hinzan \[Luxury\]](#)

ราคาเริ่มต้น 9,280 บาท/ห้อง/คืน



[Kozue \[Luxury\]](#)

ราคาเริ่มต้น 9,410 บาท/ห้อง/คืน



[The Maples Niseko \[Premium\]](#)

ราคาเริ่มต้น 10,830 บาท/ห้อง/คืน



[Terrazze \[Luxury\]](#)

ราคาเริ่มต้น 10,830 บาท/ห้อง/คืน



[Snow Crystal \[Premium\]](#)

ราคาเริ่มต้น 20,250 บาท/ห้อง/คืน



[The Vale Niseko \[Luxury\]](#)

ราคาเริ่มต้น 8,550 บาท/ห้อง/คืน



# Always Niseko



Always Niseko | Fact Sheet

Open Since Dec 2016



## Always Inspiring, Always Adventurous, Always Niseko

Welcome to Always Niseko, a year-round haven in the natural wonderland of Niseko. This stylish 104 room hotel was created for travelers who seek a quality yet affordable base from which to experience the ultimate Niseko adventure. Always Niseko boasts high speed WiFi & a peaceful Kabayama setting just ten minutes' walk from the centre of Hirafu, complemented by a shuttle service & a location on Niseko's main bus route. With a cafe & bar that promises to be a lively social hub and a team who shares their love of Niseko through genuine service, Always Niseko is set to be Niseko's most inspiring address during its inaugural season & always...



### HOUSEKEEPING

Daily Service Cleaning.

### BREAKFAST

Available onsite. Restaurant concept and menu details to be provided closer to the winter season.

### SHUTTLE SERVICE

Scheduled shuttle service available for pick up / drop off to the Hirafu Welcome Centre and to the Ski lifts in Hirafu. Timetable to be provided closer to the winter season.

### Building Amenities:

High Speed WiFi | Interconnecting Rooms on Request | Shuttle Service | Reception & Guest Services | Pay-Per-Use Washing Machines | Ski & Boot Storage | Air Conditioning | On-site Parking | On-site Cafe | Wheelchair Accessible Rooms | 24-hour Assistance | Rooms with Bath Tubs on Request

Category	No. of Units	Level	Nominal Size (m <sup>2</sup> )	Std Pax	Max Pax	Bathroom
Zen Room	14	L1	22	2	2	1
Niseko Room	84	L2-4	22	2	2	1
Yotel Suite	6	L3-4	43	4	4	1

## Hotel : Always Niseko

### Location : Kabayama

\*ราคาเงินบาท / ห้อง / คืน

Room Type	Saver	Value	Powder	Holiday	Peak
	15 Mar – 27 Apr 2020	24 Feb – 14 Mar 2020	5 - 12 Jan, 3 - 23 Feb 2020	13 - 22 Jan 2020	22 Dec – 4 Jan, 23 Jan – 2 Feb 2020
Zen Room with breakfast	3,420	5,700	7,125	9,120	9,975
Niseko Room with breakfast	3,990	7,125	8,265	9,975	11,115
Yotei Suite with breakfast (Fixed Bedding, 2 X Queen beds)	7,125	10,830	12,255	12,825	14,250

# The Freshwater



The Freshwater | Fact Sheet

Open Since Jan 2008



## Premium grade stylish apartments....



The Freshwater boasts premium grade fit-out and finishes with warming alpine interior styling, featuring a selection of units for rental ranging from studio apartments to luxurious three bedroom penthouses. On some of the higher floors, oversized windows offer breathtaking views to Mount Yotei. All the furniture and fittings were custom designed for each apartment and fully functional kitchens incorporating 'state of the art' Miele appliances. The Freshwater is located in central Hirafu, a 1 minute walk from the shuttle bus stop, and a 6 minute flat walk from the family run ski slope. Restaurants, bars and convenience stores are all within a 1 or 2 minute walk from The Freshwater.

### Building Amenities:

Full Kitchens including Cook-Top and Oven | Fireplaces | Large Flat Screen Television with Satellite TV Programming | DVD/CD Players | MP3 audio jack | Free WiFi | Washing Machines and Dryers | Telephones | Individual Climate Control | Large Private Balconies | Triple glazed windows for superior sound & heat insulation | Ski hill & Mt Yotei Panoramic views

Category	No. of Units	Level	Nominal Size (m <sup>2</sup> )	Std Pax	Max Pax	Bathroom
Studio Room	11	L2-4	28	2	2	1
1 Bedroom	9	L2-4	67	2	4	1
2 Bedroom	9	L2-4	85	4	6	2
2 bdr Penthouse Mountain View Deluxe	1	L5	90	4	6	1
2 bdr Penthouse Alpine Panorama (Spa)	1	L5	118	4	6	2
3 bdr Penthouse Mountain View Deluxe	1	L5	112	6	8	2
3 bdr Penthouse Alpine Panorama (Spa)	1	L5	138	6	8	3

*\*Please note some rooms have no views*

**Hotel : The Freshwater**  
**Location : Central Village**

**\*ราคาเงินบาท / ห้อง / คืน**

Room Type	Saver	Value	Powder	Holiday	Peak
	15 Mar – 27 Apr 2020	24 Feb – 14 Mar 2020	5 - 12 Jan, 3 - 23 Feb 2020	13 - 22 Jan 2020	22 Dec - 4 Jan, 23 Jan – 2 Feb 2020
Freshwater studio (Hotel Style with kitchenette)	6,840	9,690	10,830	11,970	13,680
1bdr Freshwater	9,405	13,110	14,820	16,245	18,525
2bdr Freshwater	15,105	21,090	23,940	26,220	29,925
2bdr Mountain View Deluxe	16,815	23,370	26,790	29,355	33,345
2bdr Alpine Panorama Penthouse	17,955	25,080	28,500	31,350	35,625
3bdr Mountain View Deluxe	23,940	33,345	38,190	41,895	47,595
3bdr Alpine Panorama Penthouse	24,225	33,915	38,760	42,750	48,450



# The Setsumon



The Setsumon | Fact Sheet

Open Since Jan 2008



## Boutique luxury in the heart of Niseko...

The Setsumon offers a premium central location, with roughly half of the rooms boasting views to the Hirafu ski fields, and immediate access to ski lifts. The Setsumon features a modest mixture of architecturally appointed studios, one, two and three bedroom apartments, plus one spectacular penthouse. Each apartment features all you need for a stylish comfortable ski side vacation, including designer interiors and fully functional kitchens incorporating 'state of the art' Miele appliances. With world famous dining and bars at the doorstep, guests staying at The Setsumon are just a stone's throw from all the action but a world apart.



## Building Amenities:

Full Kitchens including Cook-Top and Oven | Fireplaces | Large Flat Screen Television with Satellite TV Programming | DVD/CD Players | BOSE speakers | MP3 audio jack | Free WiFi | Washing Machines and Dryers | Telephones | Individual Climate Control | Large Private Balconies | Triple glazed windows for superior sound & heat insulation | Some ski hill views

Category	No. of Units	Level	Nominal Size (m <sup>2</sup> )	Std Pax	Max Pax	Bathroom
Setsumon Studio Room	7	L1-4	45	2	3	1
Penthouse Studio Room	1	L5	30	2	2	1
1 bdr Alpine Deluxe	3	L1-3	67	2	4	1
2 bdr Premier	3	L2-4	126	4	6	2
2 bdr Alpine Deluxe	3	L1-3	126	4	6	2
3 bdr Premier	3	L2-4	145	6	8	3
2 bdr Penthouse Ski View (Jacuzzi)	1	L5	126	4	6	2
3 bdr Penthouse Ski View (Jacuzzi)	1	L5	155	6	8	3

*\*Please note some rooms have no views*

**Hotel : The Setsumon**  
**Location : Upper Hirafu**

**\*ราคาเงินบาท / ห้อง / คืน**

Room Type	Saver	Value	Powder	Holiday	Peak
	15 Mar – 27 Apr 2020	24 Feb – 14 Mar 2020	5 - 12 Jan, 3 - 23 Feb 2020	13 - 22 Jan 2020	22 Dec - 4 Jan, 23 Jan – 2 Feb 2020
Setsumon Penthouse studio	7,410	9,690	11,115	13,110	14,820
Setsumon studio	8,265	10,545	12,255	14,250	16,245
1bdr Alpine Deluxe	12,825	16,530	19,095	22,230	25,365
2bdr Alpine Deluxe	16,530	21,375	24,510	28,785	32,775
2bdr Premier	16,815	21,945	25,365	29,640	33,630
2bdr Ski View Penthouse	25,080	32,490	37,620	44,175	50,160
3bdr Premier	22,515	29,355	33,915	39,615	45,030
3bdr Ski View Penthouse	29,640	38,475	44,175	51,870	58,995



# Setsugetsu



Setsugetsu | Fact Sheet

Open Since 2008



## Beautifully Modern & Contemporary Japanese Design

Designed by the acclaimed architect Nakayama Makoto, this delightful property boasts top quality modern appliances, peaceful surroundings and fantastic views, while only minutes away from all restaurants, bars, and the Ace Family ski slope. This eight-bedroom property can be rented entire to sleep up to 17, or in parts including the four-bed penthouse, three bedroom luxury apartment and single-bed studio for two with kitchenette.



SETSUGETSU

### Building Amenities:

Split Level Apartments | Panel and Radiant Heating | Fully Equipped Kitchen | Coffee Machine | High Speed WiFi | DVD Player | Complimentary DVD Library | iPod Speaker and Charger | Dry Room | Two Car Garage | Mt Yotei Views | Central Hirafu Location

Category	No. of Units	Level	Nominal Size (m <sup>2</sup> )	Std Pax	Max Pax	Bathroom
Studio Room	1	L2	35	2	2	1
3 Bedroom	1	L2&3	182	6	7	3
4 Bedroom Penthouse	1	L3&4	216	8	9	3

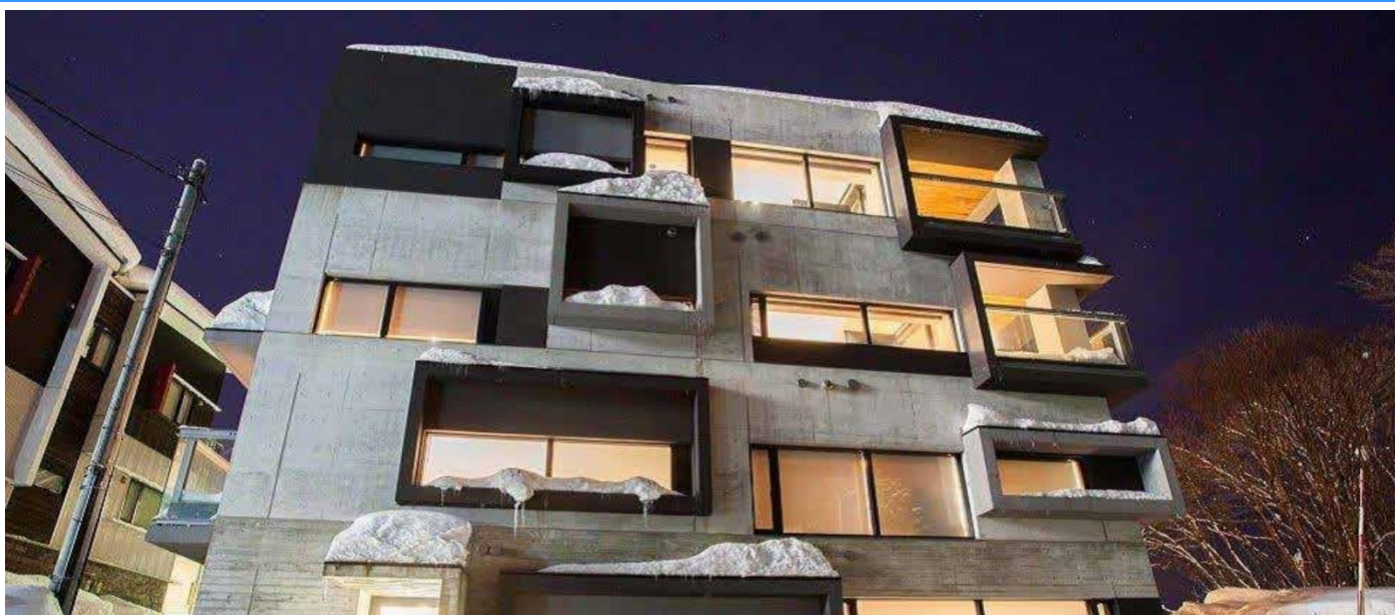
**Hotel : Setsugetsu**  
**Location : Central Village**

**\*ราคาเงินบาท / ห้อง / คืน**

Room Type	Saver	Value	Powder	Holiday	Peak
	15 Mar - 27 Apr 2020	24 Feb - 14 Mar 2020	5 - 12 Jan, 3 - 23 Feb 2020	13 - 22 Jan 2020	22 Dec – 4 Jan, 23 Jan – 2 Feb 2020
Studio	8,550	10,830	12,540	14,820	16,815
3 bedroom apartment	23,370	30,495	35,055	41,040	46,740
4 bedroom Penthouse	29,925	39,045	45,030	52,725	59,850



# Hinzan



Hinzan | Fact Sheet

Brand New Completion For 2019



## Modern and Luxury Living in The Heart of Central Hirafu

Brand new launch for 2019 season, Hinzan's modern European duplex-style units in the heart of snowy Hirafu village are designed to deliver a luxury experience in a breathtaking location. Hinzan's unique architectural design reflects Niseko's natural wonder, with a brand-new refined interior fit-out and heated wooden flooring throughout to ensure warmth and comfort. Just moments from the mountain and with the vibrant night-life and world class dining of Niseko at your doorstep. At Hinzan all the convenience of a central location meets the luxury and tranquility of a truly purpose-designed apartment. Whether you'll stay in the fully-equipped modern studio or expansive penthouse with breathtaking views of Mount Yotei, Hinzan puts you in the perfect position to enjoy everything Niseko has to offer.

品山  
HINZAN

Conveniently located on the ground floor of the building, there is an exclusive sushi restaurant named Sushi Kato that will be opening December 2019 serving lunch, dinner and drinks.

### Building Amenities:

On-site Reception | On-site Restaurant | Ski Valet | Free Wifi | Parking

Category	No. of Units	Level	Nominal Size (m <sup>2</sup> )	Std Pax	Max Pax	Bathroom
Superior Studio	2	L 2-3	43	2	3	1
Penthouse Studio	1	L 4	29	2	2	1
2 Bedroom Premier	2	L 2&3 (Duplex)	100	4	6	2
2 Bedroom Penthouse	1	L 4	112	4	6	2
3 Bedroom Premier	2	L 2&3 (Duplex)	143	6	8	3
3 Bedroom Penthouse	1	L 4	141	6	7	

ด้านบน

ด้านบน



**Hotel : Hinzan**

**Location : Central Village**

**เจ้าหน้าที่อำนวยความสะดวก 08.00 - 19.00 น.**

**\*ราคาเงินบาท / ห้อง / คืน**

Room Type	Saver	Value	Powder	Holiday	Peak
	15 Mar – 27 Apr 2020	24 Feb – 14 Mar 2020	5 - 12 Jan, 3 - 23 Feb 2020	13 - 22 Jan 2020	22 Dec – 4 Jan, 23 Jan – 2 Feb 2020
Penthouse studio	9,280	12,041	12,968	14,820	18,525
Superior studio	11,400	14,820	15,960	18,240	22,800
2 Bedroom Premier	24,225	31,493	33,915	38,760	48,450
2 Bedroom Penthouse	27,075	35,198	37,905	43,320	54,150
3 Bedroom Premier	34,913	45,386	48,878	55,860	69,825
3 Bedroom Penthouse	37,050	48,165	51,870	59,280	74,100

# Kozue



Kozue | Fact Sheet

Open Since Dec 2015



## Innovative, Luxurious, Harmonious: Welcome to Kozue, Niseko's Premier Luxury Residence

This pristine riverfront and clifftop site enjoys views of rolling hills through the fine branches of the treetops, known as kozue in Japanese. Kozue boasts a prime Hirafu Village location with easy access to the slopes. The architectural design is guided by the building's surrounding environment and focuses on creating a strong connection between the natural landscape and the interior spaces. A selection of natural materials provides a sense of warmth and comfort within a robust structure. The Kozue design is distinguished and luxurious. The focus on achieving a strong connection to its environment is evident in the elegant and timeless beauty of each apartment.



### Building Amenities:

Full kitchens including cook-top and oven | large flat screen television with internet | Apple TV | washing machines and dryers | floor to ceiling glass windows with picturesque forest views | under-floor heating | fully air conditioned | high speed broadband Wi-Fi | security intercom | boot drying facilities and secure ski and boot storage | private deck or balcony for most room types.

Kozue offers an on-site reception and concierge from 8am to 11am & 3pm to 6pm, with extended hours for on-call concierge service. Kozue is within easy walking distance to many of Hirafu's finest restaurants and bars, and a five minute walk from the Ace Family Chairlift.

Category	No . of Units	Level	Nominal Size (m <sup>2</sup> )	Std Pax	Max Pax	Bathroom
Studio Room Riverside	1	L1	42	2	3	1
1.5 bdr Alpine View with Murphy Bed	2	L2-3	84	4	4	1
2 bdr Forest View	2	L2-3	125	4	6	2
2 bdr Riverside	1	L1	136	4	6	2
3 bdr Riverside	1	L1	178	6	8	3
3 bdr Penthouse Yotei Panorama	1	L4	213	6	9	3.5

## Hotel : Kozue

### Location : immediate access to Ski Lifts

เจ้าหน้าที่อำนวยความสะดวก 08.00 - 19.00 น.

\*ราคาเงินบาท / ห้อง / คืน

Room Type	Saver	Value	Powder	Holiday	Peak
	15 Mar – 27 Apr 2020	24 Feb – 14 Mar 2020	5 - 12 Jan, 3 - 23 Feb 2020	13 - 22 Jan 2020	22 Dec – 4 Jan, 23 Jan – 2 Feb 2020
Kozue Riverside studio	9,410	11,970	13,110	14,820	18,525
Kozue 1.5 bdr Alpine Apartment	21,090	27,360	29,355	33,630	41,895
Kozue 2 bdr Forest View Apartment	25,650	33,060	35,625	40,755	51,015
Kozue 2 bdr Riverside Apartment	23,085	29,925	32,205	37,050	46,170
Kozue 3 bdr Riverside Apartment	30,495	39,330	42,465	48,450	60,705
Kozue 3 bdr Yotei Panorama Penthouse	41,040	53,295	57,570	61,560	82,080



# The Maples Niseko



The Maples Niseko | Fact Sheet

Open Since Dec 2018



## The Ultimate Comfort at a True Ski-in/Ski-out Condominium Hotel

The Maples offers a complete immersion into the good life that is synonymous with Niseko. The sophisticated condominium-hotel boasts 73 units including a series of apartments and penthouses that have been thoughtfully created with a keen awareness of the encircling beauty. In a brilliant blend of form and function, experiences are enhanced while contentment is heightened.

### Building Amenities:

Restaurant | Cafe | Ski-in Ski-out | Concierge Desk | Free Wifi



Category	No. of Units	Level	Nominal Size (m <sup>2</sup> )	Std Pax	Max Pax	Bathroom
Studio Resort	9	L1	34	2	2	1
Superior Studio	10	L2-5	35	2	2	1
Mountain Studio	8	L2-6	41	2	3	1
Premium Studio	1	L6	59	2	3	1
2 Bedroom Resort	7	L2-5	125	4	6	2
2 Bedroom Ski Side	3	L3-5	126	4	6	2
2 Bedroom Ski View	4	L2-5	125	4	6	2
2 Bedroom Village	7	L1-3	76	4	6	2
2 Bedroom Suite	23	L2-5	68	4	5	2
2 Bedroom Mountain Premium	2	L6	70	4	6	2
2 Bedroom Yotei Premium	2	L6	145	4	6	2
2.5 Bedroom Suite	9	L2-5	102	5	6	3
3 Bedroom Resort	7	L2-5	161	6	8	3
3 Bedroom Ski Side	3	L3-5	161	6	8	3
3 Bedroom Ski View	4	L2-5	181	6	8	3
3 Bedroom Panorama	1	L6	214	6	8	3
3 Bedroom Mountain Premium	1	L6	125	6	8	3
2 Bedroom Ski Slope Penthouse	1	L6	260	4	6	2
3 Bedroom Ski Slope Penthouse	1	L6	320	6	8	3
3 Bedroom Yotei Penthouse	1	L6	266	6	8	3
4 Bedroom Yotei Penthouse	1	L6	307	8	10	4

## Hotel : The Maples Niseko

### Location : Ski in / Ski out

\*ราคาเงินบาท / ห้อง / คืน

Room Type	Saver	Value	Powder	Holiday	Peak
	15 Mar – 27 Apr 2020	24 Feb – 14 Mar 2020	5 - 12 Jan, 3 - 23 Feb 2020	13 - 22 Jan 2020	22 Dec – 4 Jan, 23 Jan – 2 Feb 2020
Studio Resort	10,830	12,825	15,105	17,100	21,375
Studio Superior	11,400	13,680	15,960	18,240	22,800
Studio Mountain	12,540	15,105	17,670	20,235	25,080
Studio Premium	13,110	15,960	18,525	21,090	26,220
2 Bedroom Suite	22,515	27,075	31,635	36,195	45,030
2 Bedroom Village	24,795	29,925	35,055	39,900	49,590
2 bedroom Ski Side	27,360	33,060	38,475	43,890	54,720
2 Bedroom Ski View	28,215	33,915	39,615	45,315	56,430
2 Bedroom Resort	25,080	30,210	35,340	40,185	50,160
2 Bedroom Mountain Premium	23,655	28,500	33,345	37,905	47,310
2 Bedroom Yotei Premium	26,505	31,635	37,050	42,180	52,725
2.5 Bedroom Apartment (include Tatami)	27,645	35,340	41,325	47,025	58,710
3 Bedroom Resort	32,205	42,750	49,875	57,000	71,250
3 Bedroom Ski Side	33,915	45,315	53,010	60,420	75,240
3 Bedroom Ski View	35,910	47,595	55,575	63,555	79,230
3 Bedroom Mountain Premium	41,895	55,575	64,980	74,100	92,625
3 Bedroom Yotei Panorama	45,030	59,850	69,825	79,800	99,750
3 Bedroom Yotei Penthouse	64,695	86,070	100,605	114,855	143,355
2 Bedroom Ski Slope Penthouse	64,695	86,070	100,605	114,855	143,355
4 Bedroom Yotei Penthouse	71,820	95,475	111,435	127,395	159,030
3 Bedroom Ski Slope Penthouse	76,950	102,600	119,700	136,800	171,000



# Terrazze



Terrazze | Fact Sheet

Open Since Dec 2014



## Welcome to Hirafu's most exclusive address...

You'll know that you've arrived in Niseko's most luxurious address as soon as you set foot into your exquisite Terrazze apartment. Each unit is individually outfitted with carefully chosen pieces that complement the space to its greatest advantage. The clean, open layout of each apartment showcases a signature style, blending the familiar elements of a modern luxury apartment with stylish colours and high-end finishes. Sleek, contemporary furnishings are warmed by natural materials & the sunshine and spectacular mountain views filtering in from large picture windows. No expense has been spared in invoking the ambience of opulence, and touches such as special order Cassina beds, Fabbian lamps, B&B sofas and gleaming marble Maxalto coffee tables are just the beginning. You'll soon discover that each and every detail has been chosen with care to ensure not just comfort, but total bliss. All that is left for you to do is curl up in the Cassina leather lounge chair and watch the sunset over Mount Yotei, as you are warmed by the open-flame fireplace.



## Building Amenities:

Fully-equipped kitchens | ethanol fireplaces | LG 47 inch flat screen television with satellite TV and blue-ray DVD | washing machines and dryers | large picture windows facing Mt. Yotei | designer furnishings | under-floor heating in living areas and bathrooms | centralised climate control | high-speed broadband Wi-Fi | VOIP telephone | security intercom | boot drying lounge and secure ski and boot storage | Undercover heated parking with lighted pathway to building | luxury toiletries from Margaret Josephin

Terrazze offers an on-site reception and concierge from 8am to 11am and 3pm to 6pm during the peak winter season. A complimentary ski shuttle is available on demand during limited hours. The Grand Hirafu shuttle bus stop is directly opposite the building providing easy access to the upper village, Terrazze is within easy walking distance to many of Hirafu's finest restaurants and bars.

Category	No. of Units	Level	Nominal Size (m <sup>2</sup> )	Std Pax	Max Pax	Bathroom
1 bdr Alpine View	1	L1	44	2	3	1
2 bdr Alpine View	1	L1	75	4	5	2
2 bdr Mt Yotei Deluxe	1	L3	101	4	5	2
3 bdr Alpine View Inc Family Room	1	L2	116	8	8	2.5
3 bdr Mt Yotei Deluxe	1	L3	133	6	7	2.5
4 bdr Penthouse Yotei Panorama	1	L4	238	8	9	5.5



## Hotel : Terrazze

### Location : Middle Village

เจ้าหน้าที่อำนวยความสะดวก 08.00 - 19.00 น.

\*ราคาเงินบาท / ห้อง / คืน

Room Type	Saver	Value	Powder	Holiday	Peak
	15 Mar – 27 Apr 2020	24 Feb – 14 Mar 2020	5 - 12 Jan, 3 - 23 Feb 2020	13 - 22 Jan 2020	22 Dec – 4 Jan, 23 Jan – 2 Feb 2020
1 bdr Terrazze Alpine Views	10,830	13,965	15,105	17,385	21,660
2bdr Terrazze Alpine Views	18,240	23,655	25,365	29,070	36,195
2bdr Terrazze Yotei Deluxe	22,515	29,070	31,350	35,910	44,745
3bdr Terrazze Alpine Views (Include Bunk Bed room)	29,355	37,905	41,040	46,740	58,425
3 bdr Terrazze Yotei Deluxe	29,925	39,045	41,895	47,880	59,850
Terrazze Yotei Panorama Penthouse (Include onsen bathroom + sauna)	57,000	74,100	79,800	85,500	114,000

# Snow Crystal



Snow Crystal | Fact Sheet

Open Since Dec 2009



## Location, Location, Location...

Snow Crystal - nestled at the foot of the Family Ace Chairlifts of Grand Hirafu Niseko, Snow Crystal deftly marries the conveniences of immediate ski hill access with modern elegance. Offering contemporary comforts of resort-style living, Snow Crystal is an ideal accommodation choice that offers you the best in alpine luxury. Choose from two and three bedroom suites that blend all of the thoughtful touches you expect from a luxury property with a few delightful surprises like full kitchens, romantic fireplaces. With an inhouse Reception and Concierge service located on the lobby, find impeccable comfort and intuitive care with NISADE. Be refreshed by the stunning views from this wellappointed, all-suite property that is in easy walking distance to Hirafu Village and Niseko's many restaurants and bars. With convenient access to a host of exciting activities in the vicinity, Snow Crystal promises a truly enjoyable getaway - whatever the season.



## Building Amenities:

Full Kitchens including Cook-Top and Oven | Fireplaces | Large Television with Satellite TV Programming | DVD/CD Players | Free WiFi | Washing Machines and Dryers | Telephones | Some Yotei Panoramic views

Snow Crystal offers a front desk from 8am to 11am and 3pm to 6pm during the winter season, providing that extra touchpoint to our guests.

Category	No . of Units	Level	Nominal Size (m <sup>2</sup> )	Std Pax	Max Pax	Bathroom
2 bdr Snow Crystal	4	L1&2	95	4	5	2
2 bdr Mt Yotei Deluxe	6	L3-5	95	4	5	2
3 bdr Snow Crystal	3	L1&2	106	6	7	3
3 bdr Mt Yotei Deluxe	6	L3-5	106	6	7	3
2 bdr Penthouse Mt Yotei (Jacuzzi)	1	L6	95	4	5	2

## Hotel : Snow Crystal

Location : immediate access to Ski Lifts

\*ราคาเงินบาท / ห้อง / คืน

Room Type	Saver	Value	Powder	Holiday	Peak
	15 Mar – 27 Apr 2020	24 Feb – 14 Mar 2020	5 - 12 Jan, 3 - 23 Feb 2020	13 - 22 Jan 2020	22 Dec – 4 Jan, 23 Jan – 2 Feb 2020
2bdr Snow Crystal	20,250	26,220	28,215	32,490	40,470
2bdr Yotei View Deluxe	21,375	27,930	29,925	34,200	42,750
3bdr Snow Crystal	25,365	33,060	35,625	40,470	50,730
3bdr Yotei View Deluxe	25,935	33,630	36,195	41,610	51,870
2bdr Yotei Panorama Penthouse	26,505	34,485	37,050	42,465	53,010



# The Vale Niseko



The Vale Niseko | Fact Sheet

Newly Refurbished in 2018



## Niseko's Most Exclusive Residences....

Located on Niseko's best SKI-IN, SKI OUT location, The Vale Niseko offers the comfort and spaciousness of fully equipped luxury apartments packaged with the amenities of a five star hotel, including an onsite restaurant and bar, public onsen and outdoor heated swimming pool. With stunning views of the Family Ace ski run with private onsens to the uninterrupted views of Mt Yotei and surrounding alpine vistas, The Vale promises to deliver the ultimate year round holiday experience. The Vale Niseko comprises 47 one and two key residences of hotel resort rooms, studios, one, two and three bedrooms and ultra-chic Penthouse.



## Building Amenities:

Onsen | Outdoor Heated Pool | Après Ski Bar | Restaurant | Room Service | Concierge Desk | Cafe | In House Ski Shop

Category	No. of Units	Level	Nominal Size (m <sup>2</sup> )	Std Pax	Max Pax	Bathroom
Standard Resort Hotel Room	6	Lower Ground	31	2	2	1
Superior Resort Hotel Room	6	L1	32	2	2	1
Deluxe Resort Hotel Room	3	L1	36	2	3	1
Studio Room	21	L2-5	33	2	2	1
1.5 Bedroom	2	L2&3	76	4	4	1
2 bdr Resort Inc Bunk Room	2	L2&3	83	6	6	1
2 bdr Resort Deluxe Inc Tatami	2	L4&5	83	4	6	1
2 bdr Village View	4	L2-5	86	4	6	2
2 bdr Mt. Yotei View	11	L2-5	110	4	6	2
2 bdr Ski Side with Onsen	2	L2&3	114	4	6	2
2 bdr Ski View with Onsen	2	L2&3	114	4	6	2
2 bdr Ski View Deluxe with Onsen	2	L4&5	114	4	6	2
3 bdr Resort Inc Bunk Room	2	L2&3	121	8	8	2
3 bdr Resort Deluxe Inc Tatami	2	L4&5	121	6	6	2
3 bdr Birch View Inc Tatami	2	L4&5	114	6	8	2
3 bdr Mt. Yotei View	9	L2-5	151	6	8	3
3 bdr Ski Side with Onsen	2	L2&3	148	6	8	3
3 bdr Ski Side Dlx Tatami with Onsen	2	L4&5	110	6	8	2
3 bdr Ski View with Onsen	2	L2&3	148	6	8	3
3 bdr Ski View Deluxe with Onsen	2	L4&5	148	6	8	3
3 bdr Penthouse Mt. Yotei Panorama	1	L6	187	6	8	3

## Hotel : The Vale Niseko

### Location : Ski in / Ski out

\*ราคาเงินบาท / ห้อง / คืน

Room Type	Saver	Value	Powder	Holiday	Peak
	15 Mar – 27 Apr 2020	24 Feb – 14 Mar 2020	5 - 12 Jan, 3 - 23 Feb 2020	13 - 22 Jan 2020	22 Dec – 4 Jan, 23 Jan – 2 Feb 2020
Standard Hotel Room with breakfast	8,550	11,115	12,825	15,105	17,100
Superior Hotel Room with breakfast	9,690	12,540	14,535	17,100	19,380
Deluxe Hotel Room with breakfast	10,830	13,965	15,960	18,810	21,375
Vale Studio with breakfast	12,255	15,960	18,525	21,660	24,510
1bdr Birch Apartment with Murphy's bed	21,090	27,360	31,635	37,050	42,180
2bdr Resort View Deluxe (includes tatami room)	22,515	29,355	33,915	39,615	45,030
2bdr Resort View Bunk (includes bunk room)	26,505	34,200	39,615	46,455	52,725
2bdr Village View	24,510	31,635	36,480	42,750	48,735
2bdr Yotei View	27,075	35,340	40,755	47,595	54,150
2bdr Ski Side with onsen	29,925	38,760	44,745	52,440	59,565
2bdr Ski View with onsen	33,915	44,175	51,015	59,565	67,830
3bdr Birch Apartment (includes tatami room)	34,200	44,175	51,015	59,850	68,115
3bdr Resort View Deluxe (includes tatami room)	34,200	44,460	51,300	60,135	68,400
3bdr Resort View Bunk (include bunk room)	32,775	42,750	49,305	57,570	65,550
2bdr Ski View Deluxe with onsen	37,620	48,735	56,145	65,835	74,955
3bdr Yotei View	35,340	45,885	52,725	61,845	70,395
3bdr Ski Side Deluxe with onsen (includes tatami room)	42,750	55,575	64,125	75,240	85,500
3bdr Ski Side with onsen	41,895	54,435	62,985	73,815	83,790
3bdr Ski View with onsen	44,175	57,570	66,405	77,805	88,350
3bdr Ski View Deluxe with onsen	46,455	60,420	69,825	81,795	92,910
3bdr Yotei Panorama with onsen	82,365	107,160	123,690	145,065	164,730



# Yu Kiroro



Yu Kiroro | Fact Sheet

Opening Dec 2019



## Everything All Around YU

Be a step away from the world's best powder snow at Kiroro's first ever ski-in ski-out luxury condominium style hotel.

Situated amid the pristine scenery of Kiroro Resort Hokkaido, and with stunning mountain views in every direction, Yu Kiroro offers guests an opportunity to enjoy ski-to-door residence steps away from the world's best powder snow.



## Building Amenities:

Ski-in Ski-out | Ski Valet | Onsite Reception | Concierge Desk | Restaurant | Public and Private Onsen | Gym | Free Wifi | Family Space | Kids Space | Parking

Category	No . of Units	Level	Nominal Size (m <sup>2</sup> )	Std Pax	Max Pax	Bathroom
Studio	4	L2-6	47	2	3	1
1 bdr Suite	16	L2-6	62	2	4	1
2 bdr Suite	31	L1-6	84	4	6	2
2 bdr Superior	35	L1-4	95	4	6	2
2 bdr Deluxe	4	L2-6	93	4	6	2
2 bdr Family Suite Inc Tatami	1	L1-6	127	4	6	2
3 bdr Suite	9	L2-6	122	6	8	2
3 bdr Superior	6	L1-6	140	6	8	2
3 bdr Deluxe	4	L2-6	140	6	8	3
4 bdr Panorama Penthouse with Onsen	2	L7	267	8	10	4



**Hotel : Yu Kiroro****Location : Kiroro****\*ราคาเงินบาท / ห้อง / คืน**

Room Type	Saver	Value	Powder	Holiday	Peak
	1 - 30 Apr 2020	1 - 31 Mar 2020	1 - 29 Feb 2020	4 - 20 Jan 2020	21 - 31 Jan 2020
Studio	9,690	11,685	13,680	16,530	19,380
1 bedroom Suite	13,965	16,815	19,665	23,940	27,930
2 Bedroom Suite	20,805	24,795	29,070	35,340	41,325
2 Bedroom Superior	21,090	25,365	29,640	35,910	42,180
2 Bedroom Family Suite (Western + Tatami)	27,075	32,490	37,905	45,885	53,865
2 Bedroom Deluxe	20,805	24,795	29,070	35,340	41,325
3 Bedroom Suite	29,070	34,770	40,755	49,305	57,855
3 Bedroom Superior	30,210	36,480	42,465	51,585	60,420
3 Bedroom Deluxe	29,925	35,910	41,895	51,015	59,850
4 Bedroom Panorama Penthouse with Onsen	64,125	76,950	89,775	109,155	128,250

# Fenix Furano



Fenix Furano | Fact Sheet

Opening Summer 2020



## Summer Eden, Winter Heaven

Fenix Furano is located in the ultimate year-round destination, Furano Resort. Ideally positioned directly beside the mountain and ski lifts, Fenix Furano provides all the convenience of a ski-in ski-out location with the luxury and versatility of a purpose-designed property, featuring 33 full-service units ranging from hotel-style suites to multi-bedroom apartments and penthouses.

Beyond the winter, Furano is surrounded by a picturesque landscape and rolling fields of lavender, with easy access to local wine, cheese, and other fresh and unique produce. Whatever the season, Fenix Furano's incredible location and world class design promise the holiday of a lifetime.



### Building Amenities:

Ski-in Ski-out Convenience | Onsite Reception | In-house Ski Shop | Restaurant | Free Wifi

Category	No. of Units	Level	Nominal Size (m <sup>2</sup> )	Std Pax	Max Pax	Bathroom
Superior Hotel Room	29	L 2-7	24	2	2	1
Studio Room	9	L 2-6	26	2	2	1
1 Bedroom Premier Apartment	17	L 2-7	45	2	3	1
2 Bedroom Premier Apartment	9	L 2-7	71	4	5	2
2 Bedroom Deluxe Apartment	5	L 2-6	60	4	5	1
3 Bedroom Premier Apartment	4	L 2-7	101	6	7	3
3 Bedroom Deluxe Apartment	8	L 2-6	84	6	7	2

## Hotel : Fenix Furano

### Location : Furano

\*ราคาเงินบาท / ห้อง / คืน

Room Type	Saver	Value	Powder	Holiday	Peak
	1 - 30 Apr 2020	1 - 31 Mar 2020	19 - 28 Feb 2020	5 Jan - 9 Feb 2020	22 Dec- 4 Jan, 10 - 18 Feb 2020
Hotel Room	7,150	8,550	10,830	13,110	15,390
Studio	7,695	9,405	11,970	14,535	16,815
1 Bedroom Premier	8,835	10,830	13,680	16,530	19,380
2 Bedroom Premier	14,250	17,385	21,945	26,790	31,350
2 Bedroom Deluxe	13,110	16,245	20,520	24,795	29,070
3 Bedroom Premier	20,805	25,365	32,205	39,045	45,885
3 Bedroom Deluxe	18,525	22,515	28,785	34,770	40,755



<b>สำนักงานใหญ่ ลาดพร้าว</b> เลขที่ 1111/30-31 ชั้น 1-2 หมู่บ้านกลางเมืองลาดพร้าว ถ.ลาดพร้าว แขวงจันทริเกษม เขตจตุจักร กทม. 10900 Tel : 02-511-3000 Fax : 02-511-0099 E-mail : sales06@qetour.com	<b>สาขา ฟอรั่มทาวน์</b> เลขที่ 5 ห้อง 011 ชั้น 2 ศูนย์การค้าฟอรั่มทาวน์ ถ.รัชดาภิเษก แขวงดินแดง เขตดินแดง กทม. 10400 Tel : 02-246-2111 Fax : 02-246-2726 E-mail : f_info@qetour.com
<b>สาขา คริสตัลปาร์ค</b> 197,199 ชั้น 1 ห้องเคดับบลิว 107 ถ.ประดิษฐ์มนูธรรม แขวงลาดพร้าว เขตลาดพร้าว กรุงเทพฯ 10230 Tel : 02-515-0555 Fax : 02-515-0990 E-mail : crystalpark@qetour.com	<b>สาขา รัชดา</b> เลขที่ 275/5 อาคารซี ชั้นที่ 3 ถนนรัชดาภิเษก แขวงดินแดง เขตดินแดง กรุงเทพมหานคร 10400 Tel : 02-277-9999 FAX : 02-277-4567 E-mail : info@qualityexpress.co.th
<b>สาขา พัทยา</b> 3/139 หมู่ที่ 6 ถ.พญาเหินือ สาย 3 นาเกลือ บางละมุง ชลบุรี 20150 Tel : 038-425-111 Fax : 038-425-338 E-mail : pty1@qetour.com	<b>สาขา อุดรธานี</b> 540/62 ถ.โพศรี ต.หมากแข้ง อ.เมืองอุดรธานี จ.อุดรธานี 41000 Tel : 042-242-200 Fax : 042-242-900 E-mail : udon@qetour.com
<b>สาขา อุบลราชธานี</b> 26/5 ถ.นพคุณ อ.เมือง จ.อุบลราชธานี 34000 Tel : 045-250-888 Fax : 045-245-888 E-Mail : ticket21@qetour.com	<b>สาขา หาดใหญ่</b> 95/6 ถ.ศรีภูวนารถ ต.หาดใหญ่ อ.หาดใหญ่ จ.สงขลา 90110 Tel : 074-262-888-9 Fax : 074-223-880 E-mail : hatyai1@qetour.com
<b>สาขา เชียงใหม่</b> 31/8 หมู่ที่ 2 ถนนเชียงใหม่-ดอยสะเก็ด สันพระเนตร สันทราย เชียงใหม่ 50210 Tel : 053-491-888, 053-288-555 Fax : 053-491-898 E-mail : Chiangmai@qetour.com	<b>บริษัท ภูเก็ต ควอลิตี้ เอ็กซ์เพรส จำกัด</b> 99/10-11 หมู่ 4 ถ.เจ้าฟ้า ตะวันตก ต.วิชิต อ.เมือง จ.ภูเก็ต 83000 Tel : 076-354-999 Fax : 076-355-000 E-mail : phuket@qetour.com